

# *KillTest*

품질은 좋고 서비스도 더욱 좋습니다



# 덤프

<http://www.killtest.kr>

우리는 고객에게 년 동안 무상업데이트 서비스를 제공합니다

**Exam** : **HP0-W02**

**Title** : Implementing HP  
Storageworks EVA Solutions

**Version** : DEMO

**1.Which factor, in addition to storage and storage growth, is a typical driver for the implementation of Enterprise Virtual Array 8000 solutions?**

- A.throughput
- B.data availability
- C.backup window
- D.management cost

**Correct:A**

**2.What happens if an HSV controller reaches a critical temperature?**

- A.Ungrouped disks are powered off.
- B.Cache is put in write-through mode.
- C.Unused host ports are deactivated.
- D.Array shuts down after 180 seconds.

**Correct:B**

**3.You have a host connected to an EVA6000 using two HBAs. You find that the EVA is only accessible through one HBA. What are the possible causes? (Select three.)**

- A.There is a faulty FC cable.
- B.The Fabric is not properly zoned.
- C.One HSV controller is powered off.
- D.Virtual disk properties are set for no failback.
- E.The wrong HBA WWID was added to the host-defined ports.

**Correct:A B E**

**4.When a cache battery fails on and EVA8000, why is it important to replace this as soon as possible?**

- A.No units will be presented if the second battery also fails.
- B.Primary controller is disabled until cache battery is replaced.
- C.Secondary controller owns all units until battery status changes.
- D.The cache works in write through mode on the primary controller.

**Correct:A**

**5.Which replication method could cause an overcommit situation? (Select two.)**

- A.clone
- B.Vsnap
- C.snapclone
- D.fully allocated snapshot
- E.demand-allocated snapshot

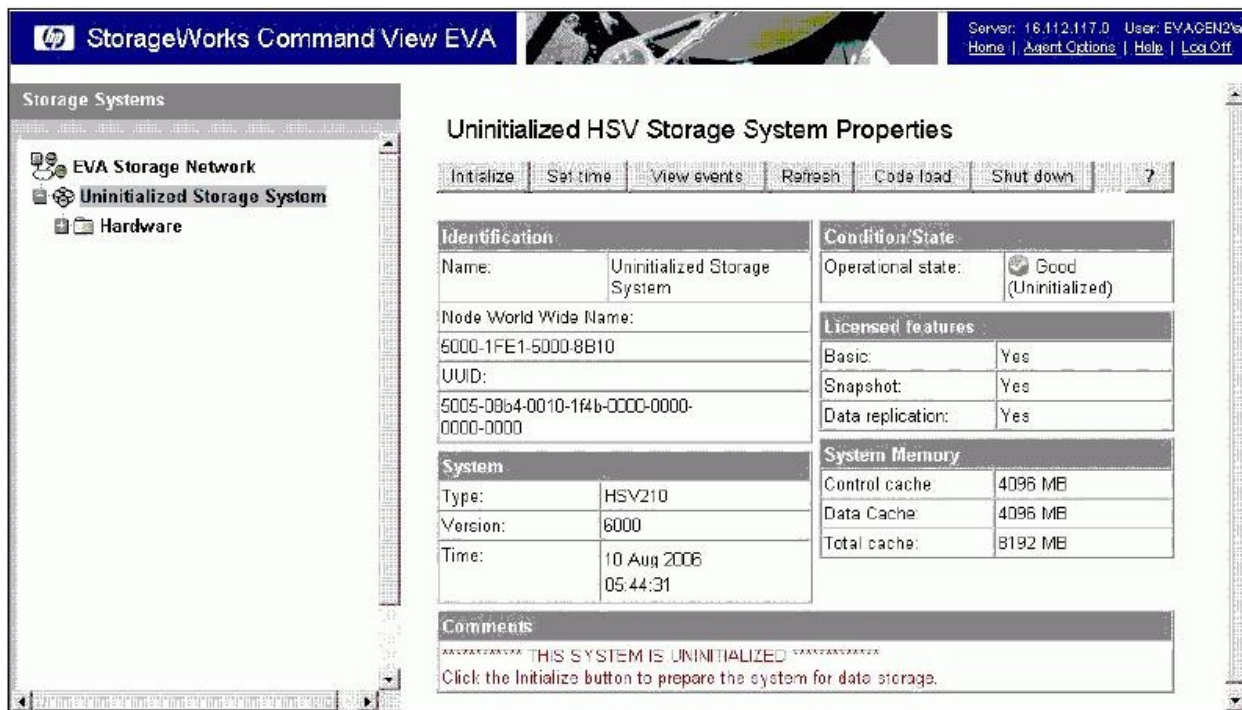
**Correct:B E**

**6.The occupancy alarm level on an EVA4000 containing one disk group is set to 90%. When will an event be generated on the Command View EVA management station?**

- A.when a virtual disk is filled above 90%
- B.when 90% of space is allocated on a single disk
- C.when 90% of disk slots are occupied in the array
- D.when usage of disk space within the disk group is above 90%

**Correct:D**

**7.Click the Exhibit button. Which EVA product is being implemented?**



- A.EVA3000
- B.EVA5000
- C.EVA4000
- D.EVA6000
- E.EVA8000

**Correct:E**

**8.How many PSEGs are used in a Vraid5 Rstore?**

- A.3+1
- B.3+2
- C.4+1
- D.4+2
- E.4+3

**Correct:C**

**9.Which tool is used to implement redundant paths to a Vdisk from an EVA4000/6000/8000 on an HP-UX system?**

- A.SAM
- B.altPath
- C.PVlinks
- D.MPIO DSM

**Correct:C**

**10.What is a characteristic of Vraid0? (Select three.)**

- A.4+0 PSEGs per Rstore
- B.4 +4 PSEGs per Rstore
- C.good read and write access
- D.no disk failure data protection
- E.single disk failure data protection

F.good read and poor write access

**Correct:A C D**

**11.What happens when I/O requests are issued to a Vdisk on the non-owning controller? (Select two.)**

- A.I/O requests issued have no performance impact.
- B.A read request issued has no performance impact.
- C.A write request issued has no performance impact.
- D.A read request issued has a higher performance impact.
- E.A write request issued has a higher performance impact.

**Correct:C D**

**12.You connect a 0C6D expansion rack to a fully equipped 2C12D rack. What is the maximum number of disk drives that can be added to achieve a supported configuration?**

- A.56
- B.60
- C.72
- D.84

**Correct:C**

**13.What causes the first write overhead on an Enterprise Virtual Array?**

- A.Vraid1
- B.Vdisk diagnosis
- C.metadata update
- D.controller intercommunication

**Correct:C**

**14.Which component in an EVA4000 subsystem is responsible for bypassing failed disk drives?**

- A.fibre channel loop switch
- B.disk drive enclosure I/O module
- C.the Array controller (HSV controller)
- D.environmental monitoring unit (EMU)

**Correct:B**

**15.How many concurrent disk drive failures with an RSS could be covered with a double disk failure protection level?**

- A.0
- B.1
- C.2
- D.4

**Correct:A**

**16.From which page would you display the loop switch property?**

- A.from the rack property page
- B.from the controller property page
- C.you can not display the information
- D.from the disk enclosure property page

**Correct:C**

**17.A customer wants to purchase a new Business Copy license for their EVA. What is the snapshot license policy based on?**

- A.number of planned snapshots
- B.usable capacity of the storage in the EVA
- C.usable capacity of the virtual disks replicated
- D.usable capacity of the planned snapshots/snapclones

**Correct:C**

**18.Which attributes are required to create a Vdisk container in Command View EVA? (Select three.)**

- A.size
- B.name
- C.spare capacity
- D.redundancy level
- E.access control list
- F.source virtual disk

**Correct:A B D**

**19.Through which interfaces can you enter the storage system name on a new EVA? (Select two.)**

- A.Command View EVA
- B.Operator Control Panel (OCP)
- C.Environmental Monitoring Unit (EMU)
- D.Replication Solutions Manager (RSM)
- E.Storage System Scripting Utility (SSSU)

**Correct:A E**

**20.A Vraid5 virtual disk has been created in a 12-member disk group. What is the result of the loss of one disk?**

- A.reordering of disks in each RSS
- B.reduction in the number of RSSs
- C.no change in the number of RSSs
- D.addition of a new Redundant Storage Set (RSS)

**Correct:B**