

KillTest

품질은 좋고 서비스도 더욱 좋습니다



덤프

<http://www.killtest.kr>

우리는 고객에게 년 동안 무상업데이트 서비스를 제공합니다

Exam : **642-564**

Title : Security Solutions for
Systems Engineers(SSSE)

Version : DEMO

1.Which two components should be included in a network design document? (Choose two.)

- A.complete network blueprint
- B.configuration for each device
- C.detailed part list
- D.operating expense
- E.risk analysis

Correct:A C

2.In which two ways do Cisco ASA 5500 Series Adaptive Security Appliances achieve containment and control? (Choose two.)

- A.by enabling businesses to create secure connections
- B.by preventing unauthorized network access
- C.by probing end systems for compliance
- D.by tracking the state of all network communications
- E.by performing traffic anomaly detection

Correct:B D

3.What is a benefit of the Cisco Integrated Services Routers?

- A.Intel Xeon CPUs
- B.built-in event correlation engine
- C.built-in encryption acceleration
- D.customer programmable ASIC

Correct:C

4.Look at the picture.

Drag the descriptions on the left to the corresponding security feature on the right. Not all descriptions are used.

allows control of web traffic based on security policy

can control protocol misuse

can proactively stop network attacks

leads to smaller holes in ACLs

allows designated users to gain temporary access

application-based filtering

lock-and-key security

stateful packet inspection

URL filtering

Correct:

5.What is a benefit of IPSec + GRE?

- A.bandwidth conservation
- B.no need for a separate client
- C.full support of Cisco dynamic routing protocols
- D.support of dynamic connections

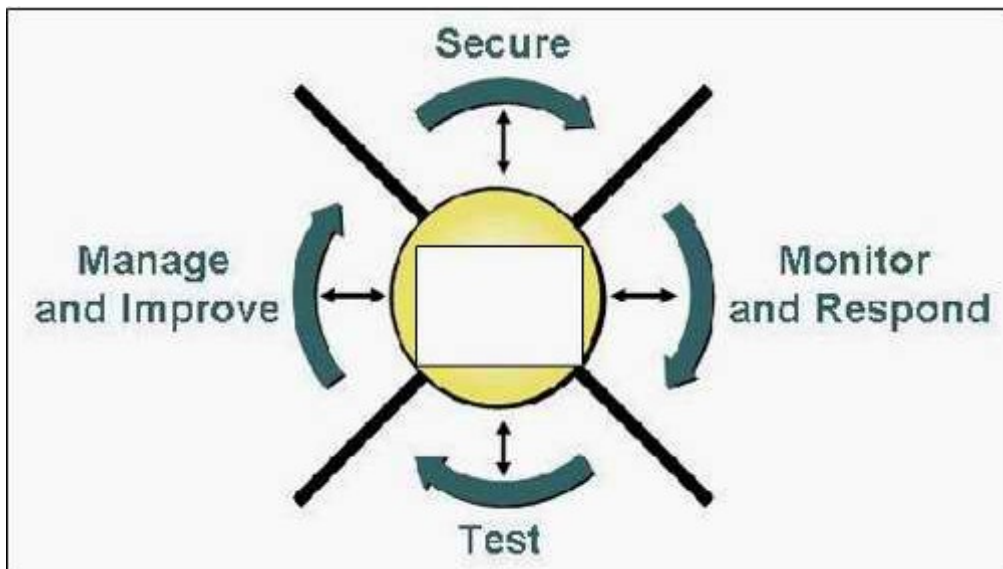
Correct:C

6.Which Cisco IOS feature uses multipoint GRE and the Next Hop Resolution Protocol to create dynamic IPSec tunnels between spoke (branch) sites?

- A.Easy VPN
- B.V3PN
- C.DMVPN
- D.Web VPN

Correct:C

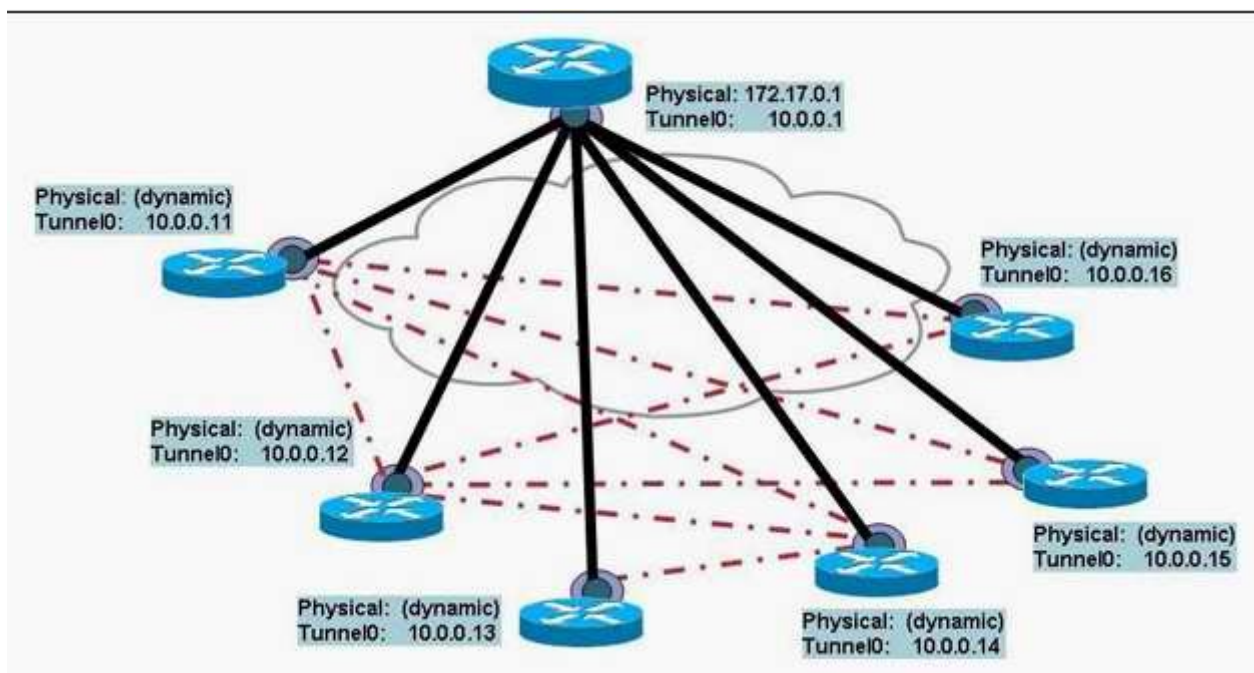
7.Refer to the exhibit. Network security is a continuous process that is built around which element?



- A.business requirements
- B.corporate security policy
- C.customer needs
- D.security best practice

Correct:B

8.Refer to the exhibit. As each spoke site is added, spoke-to-spoke and spoke-to-hub connectivity will be required. What is the best VPN implementation option?



- A.GRE over IPsec with dynamic routing
- B.IPsec DMVPN
- C.IPsec Easy VPN
- D.V3PN

Correct: B

9. Which statement is true about the Cisco Security MARS Global Controller?

- A. The Global Controller receives detailed incidents information from the Local Controllers, and correlates the incidents between multiple Local Controllers.
- B. The Global Controller centrally manages a group of Local Controllers.
- C. Rules that are created on a Local Controller can be pushed to the Global Controller.
- D. Most data archiving is done by the Global Controller.

Correct: B

10. Which two components should be included in a detailed design document? (Choose two.)

- A. data source
- B. existing network infrastructure
- C. organizational chart
- D. proof of concept
- E. vendor availability

Correct: B D