

KillTest

품질은 좋고 서비스도 더욱 좋습니다



덤프

<http://www.killtest.kr>

우리는 고객에게 년 동안 무상업데이트 서비스를 제공합니다

Exam : **070-643**

Title : Windows Server 2008
Applications Infrastructure,
Configuring

Version : Demo

1. Your network contains a server named Server1 that has Microsoft SharePoint Foundation 2010 installed. You configure the incoming e-mail settings to use the SharePoint Directory Management service to create distribution groups and contacts in an organizational unit (OU) named OU1.

You need to ensure that e-mail distribution groups created from SharePoint are automatically created in OU1.

What should you do?

- A. From Central Administration, create a new trust relationship.
- B. From Central Administration, modify the Directory Management Service Approval List.
- C. From Active Directory Users and Computers, delegate permissions to the SharePoint 2010 Timer service account in OU1.
- D. From Active Directory Users and Computers, delegate permissions to the SharePoint Central Administration v4 application pool identity in OU1.

Answer: D

Explanation:

Configure Active Directory

Incoming e-mail uses the Microsoft SharePoint Directory Management Service to connect SharePoint sites to the directory services used by your organization. If you enable the Microsoft SharePoint Directory Management Service, users can create and manage distribution groups from SharePoint sites.

SharePoint lists that use e-mail can then be found in directory services, such as the Address Book. You must also select which distribution group requests from SharePoint lists require approval. The Microsoft SharePoint Directory Management Service can be installed on a server in the farm, or you can use a remote Microsoft SharePoint Directory Management Service.

To use the Microsoft SharePoint Directory Management Service on a farm or server, you must configure the Central Administration application pool identity account to have the **Create, delete, and manage user accounts** right to the container that you specify in Active Directory. The preferred way to do this is by delegating the right to the Central Administration application pool identity account. An Active Directory administrator must set up the organizational unit (OU) and delegate the **Create, delete, and manage user accounts** right to the container. The advantage of using the Microsoft SharePoint Directory Management Service on a remote farm is that you do not have to delegate rights to the organizational unit for multiple farm service accounts.

If the application pool account for Central Administration is different from the application pool account for the Web application of the list or site that is enabled for e-mail, you must use the application pool account for the Web application when completing the following procedures. You must then delegate additional rights to the Central Administration application pool account.

The following procedures are performed on a domain controller that runs Microsoft Windows Server 2003 SP1 (with DNS Manager) and Microsoft Exchange Server 2003 SP1. In some deployments, these applications might run on multiple servers in the same domain.

Important: Membership in the Domain Administrators group or delegated authority for domain administration is required to complete this procedure.

Create an organizational unit in Active Directory

1. Click Start, point to Control Panel, point to Administrative Tools, and then click Active Directory Users and Computers.
2. In Active Directory Users and Computers, right-click the folder for the second-level domain that contains your server farm, point to New, and then click Organizational Unit.

3. Type the name of the organizational unit, and then click OK.

After creating the organization unit, we recommend that you delegate the **Create, delete, and manage user accounts** right to the container.

Important: Membership in the Domain Administrators group or the Enterprise Administrators group in Active Directory, or delegated authority for administration, is required to complete this procedure.

Delegate right to the application pool account

1. In Active Directory Users and Computers, find the organizational unit that you just created.
2. Right-click the organizational unit, and then click Delegate control.
3. On the Welcome page of the Delegation of Control Wizard, click Next.
4. On the Users and Groups page, click Add, and then type the name of the application pool identity account that the Web application uses.
5. In the Select Users, Computers, and Groups dialog box, click OK.
6. On the Users or Groups page of the Delegation of Control Wizard, click Next.
7. On the Tasks to Delegate page of the Delegation of Control Wizard, select the Create, delete, and manage user accounts check box, and then click Next.
8. On the last page of the Delegation of Control Wizard, click Finish to exit the wizard.

If you must add permissions for the application pool identity account directly, complete the following procedure.

Important: Membership in the Account Operators group, Domain Administrators group, or the Enterprise Administrators group in Active Directory, or delegated authority for administration, is required to complete this procedure.

Add permissions for the application pool account

1. In Active Directory Users and Computers, click the View menu, and then click Advanced Features.
2. Right-click the organizational unit that you just created, and then click Properties.
3. In the Properties dialog box, click the Security tab, and then click Advanced.
4. Click Add, and then type the name of the application pool identity account for the Web application.
5. Click OK.
6. In the Permission Entries section, double-click the application pool identity account.
7. In the Permissions section, under Allow, select the Modify permissions check box.
8. Click OK to close the Permissions dialog box.
9. Click OK to close the Properties dialog box.
10. Click OK to close the Active Directory Users and Computers plug-in.

If you decide instead to use the remote Microsoft SharePoint Directory Management Service, you must know the URL for the Web service. This URL is typically in the following format:

`http://server:adminport/_vti_bin/SharePointEmailWS.asmx`

Source: <http://technet.microsoft.com/en-us/library/cc262947.aspx>

2. Your network contains a server named Server1 that has Microsoft SharePoint Foundation 2010 installed. You install the Office Web Apps Feature on Server1.

You need to ensure that users can use their Web browsers to open the Microsoft Office Word documents stored in the SharePoint site collections.

What should you do first?

- A. Activate the Office Web Apps Feature.
- B. Install the Office File Converter Pack on Server1.

- C. Install Microsoft Office Professional 2010 on Server1.
- D. Create a new Web application named Office Web Apps.

Answer: A

Explanation:

Understanding Office Web Apps (Installed on SharePoint 2010 Products)

Microsoft Office Web Apps is the online companion to Office Word, Excel, PowerPoint and OneNote applications that enables users regardless of their location to access documents and edit documents. Users can view, share, and work on documents with others online across personal computers, mobile phones, and the Web. Office Web Apps is available to users through Windows Live and to business customers with Microsoft Office 2010 volume licensing and document management solutions based on Microsoft SharePoint 2010 Products.

Integration with SharePoint 2010 Products

Office Web Apps is tightly integrated with SharePoint 2010 Products. When you install Office Web Apps, the Office Web Apps Services are added to the list of SharePoint Services and the Office Web Apps Feature is added to the available SharePoint Features.

Office Web Apps services include the Word Viewing Service, PowerPoint Service, and Excel Calculation Services that are created and run within the context of SharePoint Services.

The Office Web Apps Feature and services integrate with SharePoint's robust enterprise content management capabilities to provide users the ability to access and work on your organization's documents from anywhere using a Web browser.

Understanding the Office Web Apps user experience

Viewing and editing Office documents

Office Web Apps gives users a browser-based viewing and editing experience by providing a representation of an Office document in the browser. When a user clicks on a document stored in a SharePoint document library, the document opens directly in the browser. The document appears in the browser similar to how it appears in the Office client application. The Web app also provides many of the same editing features as an Office client application.

Office Web Apps provides this representation of an Office Word document, PowerPoint presentation, Excel workbook, or OneNote notebook using native browser objects such as HTML, JavaScript, and images. Each document type is handled differently depending on the Office Web Apps services started and whether the Office Web Apps Feature is activated.

A document in the Word Web App, PowerPoint Web App, or Excel Web App can be edited in the browser or can be opened for editing in the associated Office client application. If while viewing or working in a Web app a user clicks the **Edit in Browser** button on the Home tab of the toolbar, the user can perform light editing tasks in the browser. A notebook in the OneNote Web App can be edited in the browser natively without having to click the **Edit in Browser** button or it can be opened for editing in the OneNote client application by clicking **Open in OneNote**.

If while in a Web app a user clicks the **Open in Word**, **Open in PowerPoint**, **Open in Excel**, or **Open in OneNote** button on the toolbar, the document will open in the associated Office client application if it is installed on the client computer.

Improving the user experience with Silverlight

Silverlight is a free plugin that can provide richer Web experiences for many browsers. The Silverlight plugin is not required to be installed on the client browser to use Office Web Apps.

However, having the Silverlight plugin installed on the browser can provide the following benefits:

- When using the Word Web App on browsers with the Silverlight plugin installed, users can experience faster page loading, improved text fidelity at full zoom, ClearType tuner settings support, and improved accuracy in location of search string instances when using the find on this page feature.
- When using the PowerPoint Web App on browsers with the Silverlight plugin installed, users can experience faster page loading, animations will appear smoother than without, and presentation slides will scale with the browser window size.

Having Silverlight installed on the client browser does not provide any additional benefits in Excel Web App and OneNote Web App.

Source: <http://technet.microsoft.com/en-us/library/ff431685.aspx>

3. Your network contains a server farm that has Microsoft SharePoint Foundation 2010 installed. You need to ensure that users can receive SMS alerts.

What should you do?

- A. Configure the User Alerts settings.
- B. Configure the Send To Connections.
- C. Modify the Outgoing E-Mail Settings.
- D. Modify the Mobile Accounts Settings.

Answer: D

Explanation:

Configure a mobile account (SharePoint Foundation 2010)

This article discusses how to configure and manage a mobile account for Microsoft SharePoint Foundation 2010 to enable users to subscribe to alerts that are sent by using Short Message Service (SMS). The alerts are sent to users' mobile phones when changes are made to a SharePoint list or item. The mobile alert feature resembles a feature that already exists in SharePoint Foundation 2010 that enables outgoing e-mail alerts. However, instead of receiving alerts via e-mail when changes are made in a SharePoint list or item, users receive the alerts on their mobile phones. For more information about e-mail alerts, see [Configure outgoing e-mail \(SharePoint Foundation 2010\)](#).

A SharePoint site is usually located on an intranet. As a result, access to the SharePoint site can be difficult when users are away from the office - for example, when they are traveling or attending a business dinner. The mobile alert feature enables users to react quickly when they receive an SMS alert that an item in a SharePoint list has changed.

Configure a mobile account

You can configure a mobile account for a server farm or for a specific Web application, either by using Central Administration or Windows PowerShell.

Note: If you cannot configure a mobile account, you may have the wrong certificate file. In that case, contact your service provider.

If you cannot configure a mobile account, you may have the wrong certificate file. In that case, contact your service provider.

To configure or edit a mobile account for a server farm by using Central Administration

1. Verify that you have the following administrative credentials:
 - To configure a mobile account for a server farm, you must be a member of the Farm Administrators group on the computer that is running the SharePoint Central Administration Web site.
2. On the Central Administration Home page, click System Settings.
3. On the System Settings page, in the E-Mail and Text Messages (SMS) section, click Configure mobile

account.

4. On the Mobile Account Settings page, in the Text Message (SMS) Service Settings section, click the Microsoft Office Online link to access a list of service providers.
5. On the Find an Office 2010 Mobile Service Provider page, in the Choose your wireless service provider's country/region list, select the country or region in which your wireless service provider is located.
6. On the Find an Office 2010 Mobile Service Provider page, in the Choose your current wireless service provider list, select the wireless service provider that you want to use.
After you make this selection, you are directed to the Web site of the service provider that you selected. On the Web site, you apply for the SMS service. When you receive the required information from the service provider, return to the Mobile Accounts Settings page.
7. In the The URL of Text Message (SMS) Service box, type the URL of the SMS service.
Note: Ensure that the service URL you enter is an HTTPS URL.
8. In the User Name box and Password box, type the user name and password that you received from the SMS service provider.
9. To confirm that the URL and user credentials are correct, click Test Service.
Click OK.

Source: <http://technet.microsoft.com/en-us/library/ee428292.aspx>

4. Your network contains two servers named Server1 and Server2 that run Windows Server 2008 R2. Server1 is an SMTP server. Server2 has Microsoft SharePoint Foundation 2010 installed. On Server2, you configure Server1 as an outbound e-mail server. You discover that users never receive e-mail alerts and invitations. You need to ensure that users receive e-mail alerts and invitations.

What should you do?

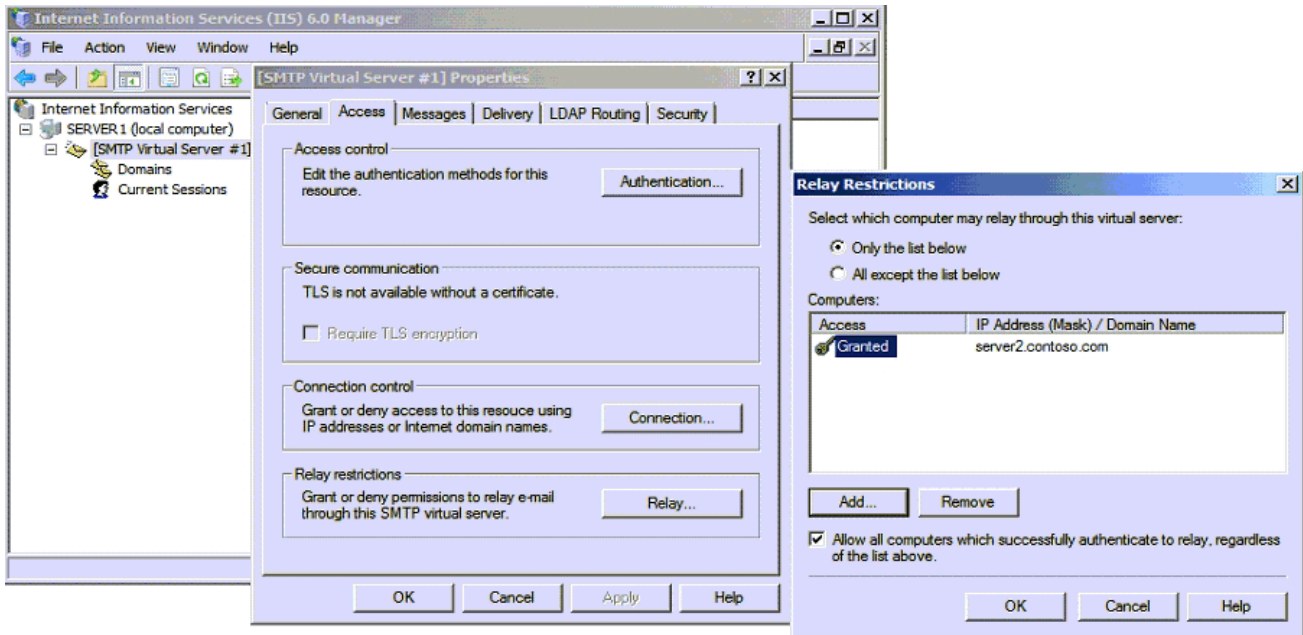
- A. On Server1, modify the relay restrictions.
- B. On Server1, modify the connection control settings.
- C. On Server2, create a Send To Connection.
- D. On Server2, modify the Mobile Account Settings.

Answer: A

Explanation:

To change the SMTP Virtual Server Relay Restrictions, one needs to use the Internet Information Servers (IIS) 6.0 Manager.

This is an IIS Role Service that needs to be installed (IIS 6 Management Console)



5. Your network contains a server farm that has Microsoft SharePoint Foundation 2010 installed. The farm contains two Web applications named WebApp1 and WebApp2. You need to ensure that WebApp1 is enabled for outgoing e-mail.

What should you configure on WebApp1?

- A. the General settings
- B. the Manage Features
- C. the Service Connections settings
- D. the User Policy

Answer: A

Explanation:

To configure outgoing e-mail for a specific Web application by using Central Administration

Verify that you have the following administrative credentials: You must be a member of the Farm Administrators group on the computer that is running the SharePoint Central Administration Web site.

In Central Administration, in the **Application Management** section, click **Manage web applications**.

On the Web Applications Management page, select a Web application, and then in the **General Settings** group on the Ribbon, click **Outgoing E-mail**.

On the Web Application Outgoing E-Mail Settings page, in the **Mail Settings** section, type the SMTP server name for outgoing e-mail (for example, mail.fabrikam.com) in the **Outbound SMTP server** box.

In the **From address** box, type the e-mail address (for example, the site administrator alias) as you want it to be displayed to e-mail recipients.

In the **Reply-to address** box, type the e-mail address (for example, a help desk alias) to which you want e-mail recipients to reply.

In the **Character set** list, click the character set that is appropriate for your language.

Click **OK**.

6. Your network contains a server that has Microsoft SharePoint Foundation 2010 installed.

You need to configure the incoming e-mail settings to use the Automatic settings mode.

What should you do first?

- A. Configure the outgoing e-mail settings.
- B. Configure the Message Queuing feature.
- C. Install the SMTP Server feature.
- D. Install the Message Queuing Triggers feature.

Answer: C

Explanation:

When incoming e-mail is enabled, SharePoint sites can receive and store e-mail messages and attachments in lists and libraries. This article describes two scenarios, one basic and one advanced. The basic scenario applies to a single-server farm environment and is recommended if you want to use default settings, whereas the advanced scenario applies to a single-server farm or a multiple-server farm and contains several advanced options from which to choose.

Install and configure the SMTP service

Incoming e-mail for SharePoint Foundation 2010 uses the SMTP service. You can use the SMTP service in one of two ways. You can install the SMTP service on one or more servers in the farm, or administrators can provide an e-mail drop folder for e-mail that is forwarded from the service on another server.

Install the SMTP service

If you are not using a drop folder for e-mail, the SMTP service must be installed on every front-end Web server in the farm that you want to configure for incoming e-mail. To install the SMTP service, use the Add Features Wizard in Server Manager. After the procedure is complete, a default SMTP configuration has been created. You can customize this default SMTP configuration to meet the requirements of your environment.

To install the SMTP service

1. Verify that you have the following administrative credentials:
 - You must be a member of the Administrators group on the local computer.
2. Click Start, point to Administrative Tools, and then click Server Manager.
3. In Server Manager, click Features.
4. In Features Summary, click Add Features to open the Add Features Wizard.
5. On the Select Features page, select SMTP Server.
6. In the Add Features Wizard dialog box, click Add Required Features, and then click Next.
7. On the Confirm Installation Selections page, click Install.
8. On the Installation Results page, ensure that the installation finished successfully, and then click Close.

Source: <http://technet.microsoft.com/en-us/library/cc287879.aspx>

7. Your network contains a server named Server1 that has Microsoft SharePoint Foundation 2010 installed. Server1 contains a Web application named WebApp1. You activate the Office Web Apps Feature on WebApp1. When users open Microsoft Office Word documents from WebApp1, the documents open in Word. You need to ensure that when users open Word documents from WebApp1, the documents open in a Web browser.

What should you do?

- A. Deactivate the OpenInClient feature.
- B. Run the Set-SPWebApplication cmdlet.
- C. Restart the SharePoint 2010 User Code Host service.

D. Recycle the SharePoint Web Services Root application pool.

Answer: A

Explanation:

Configure the default open behavior for documents

In SharePoint, you can configure whether browser-enabled documents are opened in a client application or in the browser. By default, when Office Web Apps is installed, Office documents will open in the browser. You can override this setting using the SharePoint OpenInClient feature. The OpenInClient feature can be configured in Central Administration or by using the SPFeature cmdlet in Windows PowerShell.

How documents open in SharePoint varies depending on whether the OpenInClient feature is present, and either enabled or disabled:

- If the OpenInClient feature is not present and Office Web Apps is not installed, documents will open in the client application (SharePoint default).
- If the OpenInClient feature is not present, Office Web Apps is installed and Office Web Apps service applications are activated, documents will open in the browser (Office Web Apps default).
- If the OpenInClient Feature is present and enabled, and Office Web Apps service applications are activated, documents will open in the client application.
- If the OpenInClient Feature is present and disabled, and Office Web Apps service applications are activated, documents in will open in the browser.

Source: <http://technet.microsoft.com/en-us/library/ee837425.aspx>

8. You install the Windows Deployment Services (WDS) role on a server that runs Windows Server 2008 R2. When you attempt to upload spanned image files to the WDS server, you receive an error message. You need to ensure that the image files can be uploaded.

What should you do?

- A. Grant the Authenticated Users group Full Control on the \REMINST directory.
- B. Run the wdsutil /Convert command at the command prompt on the WDS server.
- C. Run the imagex /Export command at the command prompt to export *.swm files to one destination *.wim on the WDS server.
- D. Run the wdsutil /add-image /imagefile:\\server\share\sources\install.wim /image type:install command for each component file individually at the command prompt on the WDS server.

Answer: C

Explanation:

Known issues with creating images

You cannot add split .wim (.swm) files to your Windows Deployment Services server. Instead, you must combine the split images into a single .wim file.

Source:

http://download.microsoft.com/download/b/b%2F5/bb50037f-e4ae-40d1-a898-7cdfcf0ee9d8/WS08_STEP_BY_STEP_GUIDE/Step-by-StepGuideForWindowsDeploymentServicesInWindowsServer2008_En.doc

One can combine multiple .swm files to an .wim file with imagex.exe:

imagex /export src_file src_numbersrc_name dest_file dest_name [/boot | /check | /compress [type] | /ref [splitwim.swm] /temp | /logfile filename.log]

Exports a copy of the specified .wim file to another .wim file. The source and destination files must use the

same compression type. You can also optimize an image by exporting to a new image file. When you modify an image, ImageX stores additional resource files that increase the overall size of the image. Exporting the image will remove unnecessary resource files.

src_file Specifies the file path of the .wim file that contains the image to be copied.
src_number Specifies the number of the specific volume within the .wim file.
src_name Specifies the name that identifies the image in the source .wim file.
dest_file Specifies the file path of the .wim file that will receive the image copy.
dest_name Specifies the unique name for the image in the destination .wim file.

/ref splitwim.swm

Enables the reference of split .wim files (SWMs). *splitwim.swm* is the name and location of additional split files. Wildcards are accepted.

Source: <http://technet.microsoft.com/en-us/library/dd799302%28WS.10%29.aspx>

Image Merge

Merge the previously splitted image file back into a single image file.

imagex /ref c:\data\splitmerge\output2\splitmerge*.swm /check /export

c:\data\splitmerge\output2\splitmerge.swm 1 c:\data\splitmerge\output3\splitmerge.wim "splitmerge"
/COMPRESS maximum

** I've changes the answer from **wdsutil /Export** to **imagex /Export** because I couldn't verify the awnser in the dump.**

Because wdsutil does not have an /Export parameter:

Source: <http://technet.microsoft.com/en-us/library/cc771206%28WS.10%29.aspx>

9. Your company has four regional offices. You install the Windows Deployment Services (WDS) role on the network. Your company creates three images for each office. There are a total of 12 images for the company. The images will be used as standard images for workstations. You deploy the images by using WDS. You need to ensure that each administrator can view only the images for his or her regional office. What should you do?

- A. Create a global group for each regional office and place the computers in the appropriate global group.
- B. Create an organizational unit (OU) for each regional office and place the computers in the appropriate OU.
- C. Place all images into a single image group on the WDS server. Grant each administrator permissions to the image group.
- D. Place each regional office into a separate image group on the WDS server. Grant each administrator permissions to his or her regional office's image group.

Answer: D

Explanation:

image group: Each image group has a unique name and an ACL to specify users who are allowed to deploy OS images from the image group. An image group may contain multiple OS image containers.

Source: <http://msdn.microsoft.com/en-us/library/dd891274%28v=prot.10%29.aspx>

10. You install the Windows Deployment Services (WDS) role on a server that runs Windows Server 2008 R2. You plan to install Windows 7 on a computer that does not support Preboot Execution Environment (PXE). You have a Windows 7 image that is stored on the WDS server. You need to start the computer and install the image that is stored on the WDS server.

What should you create?

- A. a capture image
- B. a CD-ROM that contains PXE drivers
- C. a discover image
- D. an install image

Answer: C

Explanation:

Creating discover images

If you have a computer that is not PXE enabled, you can create a discover image and use it to install an operating system on that computer. Otherwise, you can skip this section. When you create a discover image and save it to media (CD, DVD, USB drive, and so on), you can then boot a computer to the media. The discover image on the media locates a Windows Deployment Services server, and the server deploys the install image to the computer. You can configure discover images to target a specific Windows Deployment Services server. This means that if you have multiple servers in your environment, you can create a discover image for each, and then name them based on the name of the server.

Source: <http://technet.microsoft.com/en-us/library/cc766320%28WS.10%29.aspx>

11. Your company has an Active Directory domain. You have a server named KMS1 that runs Windows Server 2008 R2. You install and configure Key Management Service (KMS) on KMS1. You plan to deploy Windows Server 2008 R2 on 10 new servers. You install the first two servers. The servers fail to activate by using KMS1. You need to activate the new servers by using the KMS server.

What should you do first?

- A. Complete the installation of the remaining eight servers.
- B. Configure Windows Management Instrumentation (WMI) exceptions in Windows Firewall on the new servers.
- C. Install Volume Activation Management Tool (VAMT) on the KMS server and configure Multiple Activation Key (MAK) Proxy Activation.
- D. Install Volume Activation Management Tool (VAMT) on the KMS server and configure Multiple Activation Key (MAK) Independent Activation.

Answer: A

Explanation:

Key Management Service

With KMS, IT pros can complete activations on their local network, eliminating the need for individual computers to connect to Microsoft for product activation. KMS is a lightweight service that does not require a dedicated system and can easily be co-hosted on a system that provides other services. By default, volume editions of Windows 7 and Windows Server 2008 R2 connect to a system that hosts the KMS service to request activation. No action is required from the user.

KMS requires a minimum number of computers (physical or virtual machines) in a network environment. The organization must have at least five computers to activate Windows Server 2008 R2 and at least 25 computers to activate clients that are running Windows 7. These minimums are referred to as activation thresholds.

To use KMS activation with Windows 7, the computer must have the qualifying OS license (often obtained through OEMs as part of the new PC purchase) and contain a Windows Marker in BIOS.

Source: <http://technet.microsoft.com/en-us/library/ff793423.aspx>

12. Your company has a single Active Directory domain named contoso.com. All servers in the domain run Windows Server 2008 R2. The DNS Server role is installed on two domain controllers named DC1 and DC2. Both DNS servers host Active Directory-integrated zones that are configured to allow the most secure updates only. DC1 has Key Management Service (KMS) installed and activated.

You discover that the service locator records from the contoso.com zone hosted on DC1 and DC2 are missing. You need to force registration of the KMS service locator records in the contoso.com zone. What should you do?

- A. Configure the contoso.com zone to accept non-secure updates.
- B. On DC1 at the command prompt, run the slmgr.vbs rearm script.
- C. On DC1 at the command prompt, run the net stop slsvc command, and then run the net start slsvc command.
- D. On DC2 at the command prompt, run the net stop netlogon command, and then run the net start netlogon command.

Answer: C

Explanation:

A KMS host will automatically update its SRV entries if the software licensing service (slsvc.exe) detects that the computer name or TCP port has changed during service startup. It will also update them once each day, in order to ensure that they are not automatically removed (scavenged) by the DNS system.

Source: <http://download.microsoft.com/download/c/3/8/c3815ed7-ae7-4435-802b-8e855d549154/VolumeActivation2.0Step-By-StepGuide.doc>

13. Your company has a single Active Directory domain named contoso.com. The domain has two domain controllers and 60 member servers. All servers run Windows Server 2008 R2. One of the domain controllers has Key Management Service (KMS) installed and activated. All servers use KMS auto-discovery to find the KMS server. You need to change the port used by KMS from its default port to port 12200.

Which two actions should you perform? (Each correct answer presents part of the solution. Choose two.)

- A. Restart the slsvc service on the KMS server.
- B. Restart the DNS Server service on the KMS server.
- C. On the KMS server at the command prompt, run the slmgr.vbs srpt 12200 command.
- D. On the client computers at the command prompt, run the slmgr.vbs skms KMSServer: 12200 command.

Answer: AC

Explanation:

To change the port of the KMS server:

To set the TCP communications port on a KMS host. Replace *PortNumber* with the TCP port number to use. The default setting is **1688**.

slmgr.vbs /sprt *PortNumber*

Source: <http://technet.microsoft.com/en-us/library/ff793407.aspx>

Restart slsvc service:

A KMS host will automatically update its SRV entries if the software licensing service (slsvc.exe) detects that the computer name or TCP port has changed during service startup. It will also update them once each day, in order to ensure that they are not automatically removed (scavenged) by the DNS system.

Source:

<http://download.microsoft.com/download/c/3/8/c3815ed7-ae7-4435-802b-8e855d549154/VolumeActivation2.0Step-By-StepGuide.doc>

Force the KMS client to update the portnumber (not needed here):

If configuring KMS clients to use auto-discovery, they automatically choose another KMS host if the original KMS host does not respond to renewal requests. If not using auto-discovery, update the KMS client computers that were assigned to the failed KMS host by running **Simggr.vbs /skms**. To avoid this scenario, configure KMS clients to use auto-discovery. For more information, see the Volume Activation Deployment Guide.

Source: <http://technet.microsoft.com/en-us/library/ff793439.aspx>

14. Your company has a server named VS1 that runs Windows Server 2008 R2 and Hyper-V. The VS1 server hosts 10 virtual servers. A virtual server named VS-DB has one 64-GB fixed-size virtual hard disk (VHD). The VHD file name is disk1.vhd. You discover that VS-DB utilizes only 5 GB of the VHD. You turn off the VS-DB virtual server and want to regain the unused disk space on the VS1 physical server. You need to configure VS-DB to make the disk1.vhd file as small as possible.

What should you do? (To answer, move the appropriate tasks from the list of tasks to the answer area and arrange them in the correct order.)

Steps, Select from these

Steps, place here

Create a new differencing VHD file named disk2.vhd that had disk1.vhd as a parent disk.	Place first step here
Compact the disk2.vhd file	Place second step, if any, here
Delete the disk1.vhd file. Rename the disk2.vhd to disk1.vhd	Place third step, if any, here
Convert the disk1.vhd file to a new dynamically expanding VHD file named disk2.vhd	Place fourth step, if any, here
Convert the disk2.vhd file to a new fixed-size VHD file named disk1.vhd	Place fifth step, if any, here

Answer:

Steps, Select from these

Create a new differencing VHD file named disk2.vhd that had disk1.vhd as a parent disk.

Convert the disk2.vhd file to a new fixed-size VHD file named disk1.vhd

Steps, place here

Convert the disk1.vhd file to a new dynamically expanding VHD file named disk2.vhd

Compact the disk2.vhd file

Delete the disk1.vhd file. Rename the disk2.vhd to disk1.vhd

Place fourth step, if any, here

Place fifth step, if any, here

15. You have a server that runs Windows Server 2008 R2. The server has the Hyper-V server role installed. You create a new virtual machine and perform an installation of Windows Server 2003 on the virtual machine. You configure the virtual machine to use the physical network card of the host server. You notice that you are unable to access network resources from the virtual machine. You need to ensure that the virtual host can connect to the physical network.

What should you do?

- A. On the host server, install the Microsoft Loopback adapter.
- B. On the host server, enable the Multipath I/O feature.
- C. On the virtual machine, install the Microsoft Loopback adapter.
- D. On the virtual machine, install Microsoft Hyper-V Integration Components.

Answer: D

Explanation:

Networking and virtual machines

To connect a virtual machine to a virtual network, you add a virtual network adapter to the virtual machine and then connect the virtual network adapter to an existing virtual network.

There are two types of network adapters available for Hyper-V: a network adapter and a legacy network adapter.

The network adapter is designed specifically for Hyper-V and requires a virtual machine driver that is included with the Hyper-V integration services. This type of networking adapter provides better

performance than a legacy network adapter and is the recommended choice when it can be used. Because this type of virtual network adapter requires integration services in the guest operating system, it can be used only with guest operating systems for which integration services are available.

Note If a network adapter is configured for a virtual machine but integration services are not installed in the guest operating system, Device Manager lists the network adapter as an unknown device.

Source: <http://technet.microsoft.com/en-us/library/cc816585.aspx>

Integration services

Integration services are available for supported guest operating systems as described in the following table.

Windows 2003 SP2 Guest operating system - Device and service support

- Windows Server 2003 (x64 editions) with Service Pack 2

Drivers: IDE, SCSI, networking, video, and mouse

Services: operating system shutdown, time synchronization, data exchange, heartbeat, and online backup

Note This operating system does not support a legacy network adapter.

- Windows Server 2003 (x86 editions) with Service Pack 2

Drivers: IDE, SCSI, networking, video, and mouse

Services: operating system shutdown, time synchronization, data exchange, heartbeat, and online backup

Source: [http://technet.microsoft.com/en-us/library/cc794868\(WS.10\).aspx](http://technet.microsoft.com/en-us/library/cc794868(WS.10).aspx)

16. You have a server that runs Windows Server 2008 R2. The server has the Hyper-V server role installed. You need to merge a differencing disk and a parent disk.

What should you do?

- A. Edit the parent disk.
- B. Inspect the parent disk.
- C. Edit the differencing disk.
- D. Inspect the differencing disk.

Answer: C

Explanation:

Merging Differencing Disks with Hyper-V

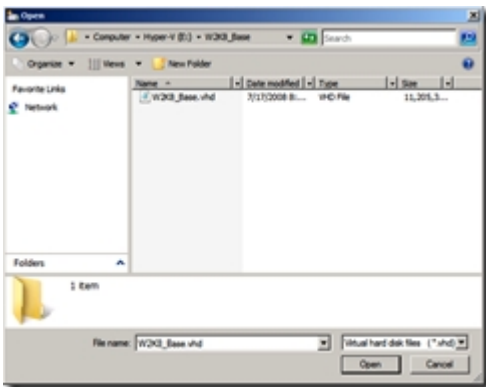
A differencing disk is a disk that is a child of a parent disk. Differencing disks are very helpful in keeping disk images small, manageable and consistent, because you can create a base parent disk- such as a Windows 2008 Standard base image- and use it as the foundation for all other guest virtual machines and disks that will be based on Windows Server 2008. For example, I have a Windows Server 2008 guest that I use exclusively as sandbox for development. I am in the process of building out another guest based on Windows Server 2008 that will be for some TFS 2008 demos that I am working on for an upcoming series of talks. Rather than copy the Windows Server 2008 guest VPC over and over again, I can simply create one differencing disk for my development environment role and one for my TFS role. The result is a VHD that represents the intersection of the base/parent disk (in this case, a barebones install of Windows Server 2008 Standard) and any additional software I've installed or configuration changes I have made. This not only conserves disk space, but also saves me a lot of time in copying hefty giga-some-odd vhds around.

Sometimes it is necessary to merge a differencing disk back to it's parent or into a new disk. For example,

you may be moving VHDs around as I did recently to a new, high speed E-SATA drive. My old drive hosted a vhd that I used as my development sandbox that used a parent on the old disk. I certainly don't want to depend on my clunky old USB 2.0 drive for the parent (the IO cost alone would be just silly), and at a minimum, there is state on the differenced guest OS that I do not want to lose.

The first thing to do is copy over the parent VHD, create a new differencing disk based on the same parent, but in the new location.

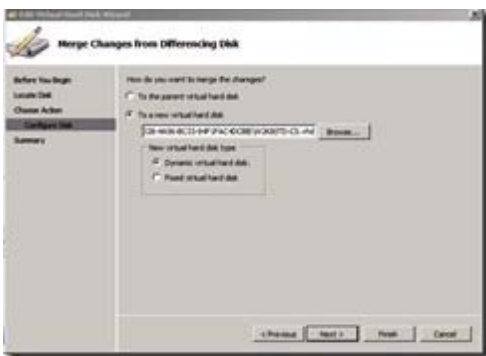
Next, since the differenced guest VHD has state that you want to move over (lest you lose it), it is necessary to merge the state of the "old" differenced guest VHD with the new copy. To do so, under Server Manager, in the Hyper-V Manager, click "Edit Disk", and locate the disk that you want to merge into a new differenced disk:



On the next screen, under Action, select "Merge":



Select "To a new virtual disk", and choose a name and path for the new disk that you created in the initial copy:



The "old" differenced disk, which is based on the original parent disk plus state from the "old" differenced disk is merged into the new disk on the drive you specified:



That's all there is to it. Differencing is a powerful feature in virtualization, and there is very nice support for migration of differenced disks right within the Server Manager.

Source: <http://rickgaribay.net/archive/2008/08/15/merging-differencing-disks-with-hyper-v.aspx>

17. You have a server that runs Windows Server 2008 R2 and has the Hyper-V server role installed. You create a new virtual machine.

You need to configure the virtual machine to meet the following requirements:

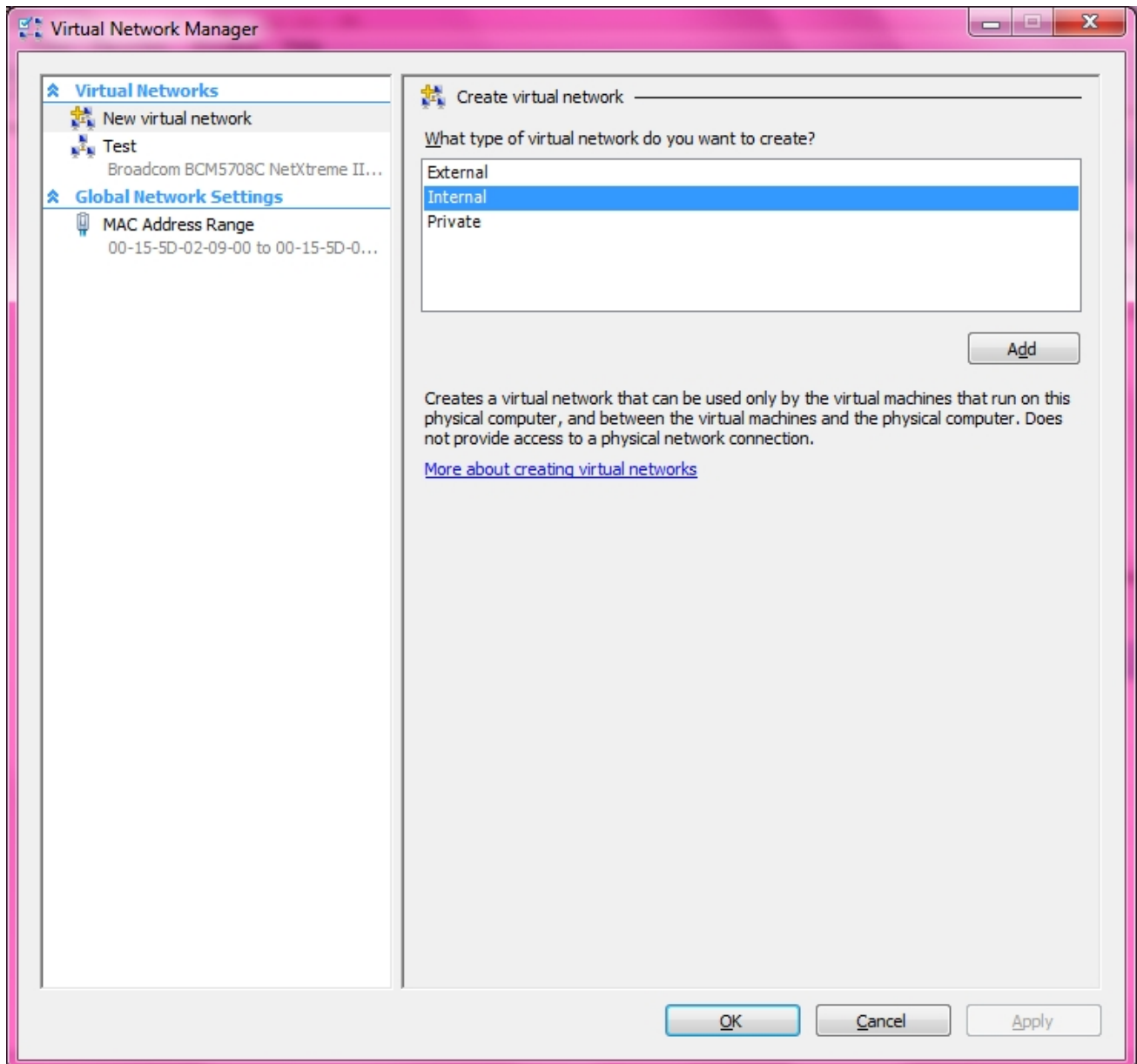
- Allow network communications between the virtual machine and the host system.
- Prevent communications to other network servers.

What should you do first?

- A. Install the Microsoft Loopback Adapter.
- B. Create a new Virtual Network.
- C. Enable Internet Connection Sharing (ICS).
- D. Set the Connection to None for the network interface card.

Answer: B

Explanation:



18. You have two servers that run Windows Server 2008 R2 Enterprise. Both servers have the Failover Clustering feature installed. You configure the servers as a two-node cluster. The cluster nodes are named NODE1 and NODE2. You have an application named PrintService that includes a print spooler resource. You need to configure the cluster to automatically return the PrintService application to NODE1 after a failover.

Which two actions should you perform? (Each correct answer presents part of the solution. Choose two.)

- A. Set the Period (hours) option to 0 in the properties of the print spooler resource.
- B. Move NODE1 to the top of the list of preferred owners for the PrintService application.
- C. Enable the Allow Failback and Immediate options for the PrintService application.
- D. Disable the If restart is unsuccessful, failover all resources in this server or application option in the properties of the print spooler resource.

Answer: BC

Explanation:

Preferred nodes list defined

If you define a complete preferred nodes list for a group (that is, one listing all the nodes in the cluster), then the Cluster service uses this defined list as its internal list. However, if you define a partial preferred nodes list for a group, then the Cluster service uses this defined list as its internal list and appends any other installed nodes not on the preferred list, ordered by their node IDs. For example, if you created a 5-node cluster (installing the nodes in the order *Node1*, *Node2*, *Node3*, *Node4*, and *Node5*) and defined *Node3*, *Node4*, and *Node5* as preferred owners for the resource group, PRINTGR1, the Cluster service would maintain this ordered list for PRINTGR1: *Node3*, *Node4*, *Node5*, *Node1*, *Node2*. How the Cluster service uses this list depends on whether the resource group move is due to a resource/node failure or a manual move group request.

Preferred lists and resource or node failures

For resource group or node failures, the group fails over to the node next to the current owner on the preferred nodes list. In the example above, if the resource group PRINTGR1 on *Node3* fails, then the Cluster service would fail that group over to the next node on the list, *Node4*. If you allow failback for that group, then when *Node3* comes up again, the Cluster service will fail back PRINTGR1 to that node.

Source: <http://technet.microsoft.com/en-us/library/cc737785.aspx>

19. Your company named Contoso, Ltd. has a two-node Network Load Balancing cluster. The cluster is intended to provide high availability and load balancing for only the intranet Web site. The name of the cluster is web.contoso.com. You discover that Contoso users can see the Network Load Balancing cluster in the network neighborhood and can connect to various services by using the web.contoso.com name. The web.contoso.com Network Load Balancing cluster is configured with only one port rule. You need to configure the web.contoso.com Network Load Balancing cluster to accept only HTTP traffic.

Which two actions should you perform? (Each correct answer presents part of the solution. Choose two.)

- A. Log on to one of the cluster nodes and run the wlbs disable all command.
- B. Open the Network Load Balancing Clusters console and delete the default port rules.
- C. Open the Network Load Balancing Clusters console and create a new Allow rule for TCP port 80.
- D. Open the Network Load Balancing Clusters console and change the default port rule to a disabled port range rule.

Answer: BC

Explanation:

The following procedure describes how to configure NLB on the Web tier for a typical deployment.

To configure NLB on the Web tier

Open properties for the front-end adapter (for communicating with clients on the Internet).

In **Network Load Balancing Properties** dialog box, on the **Cluster Parameters** tab, type the **Primary IP address** (the virtual IP address shared across all cluster members), **Subnet Mask**, and **Full Internet name**.

In **Network Load Balancing Properties** dialog box, on the **Host Parameters** tab, type the **Priority (Unique host ID)**, **Dedicated IP address**, and **Subnet Mask**.

In **Network Load Balancing Properties** dialog box, on the **Port Rules** tab, remove the default port rule covering ports 0 to 65535 by selecting the port rule, then clicking **Remove**.

Create a port rule for HTTP using the information in the following table, and then click **Add**.

Source: [http://technet.microsoft.com/en-us/library/ee784931 \(CS.20\).aspx](http://technet.microsoft.com/en-us/library/ee784931 (CS.20).aspx)

20. Your company has an Active Directory domain. All servers in the domain run Windows Server 2008 R2. The RD Gateway role service is installed on a server named Server1. The Remote Desktop Services server role is installed on two servers named Server2 and Server3. Server2 and Server3 are configured in a load balancing Remote Desktop Services farm named Farm1. You deploy the RD Connection Broker service on a new server named Server4. You confirm that the RD Connection Broker works correctly. You deploy a hardware load balancing device to handle the load distribution to the Remote Desktop Services farm. The device has specialized support for remote desktop services and routing tokens. You discover that the RD Connection Broker no longer works correctly. You need to ensure that the RD Connection Broker works correctly.

Which Group Policy object (GPO) should you create and apply to the Remote Desktop Server farm?

- A. A GPO that enables the Use IP Address Redirection policy setting in the RD Connection Broker section of the Remote Desktop Services Group Policy template.
- B. A GPO that disables the Use IP Address Redirection policy setting in the RD Connection Broker section of the Remote Desktop Services Group Policy template.
- C. A GPO that enables the Use RD Connection Broker load balancing policy setting in the RD Connection Broker section of the Remote Desktop Services Group Policy template.
- D. A GPO that disables the Use RD Connection Broker Load Balancing policy setting in the RD Connection Broker section of the Remote Desktop Services Group Policy template.

Answer: B

Explanation:

Use IP Address Redirection

If you disable this policy setting, the IP address of the RD Session Host server is not sent to the client. Instead, the IP address is embedded in a token. When a client reconnects to the load balancer, the routing token is used to redirect the client to their existing session on the correct RD Session Host server in the farm. Only disable this setting when your network load-balancing solution supports the use of RD Connection Broker routing tokens and you do not want clients to directly connect by IP address to RD Session Host servers in the load-balanced farm.

Source: [http://technet.microsoft.com/en-us/library/ee791821 \(WS.10\).aspx](http://technet.microsoft.com/en-us/library/ee791821 (WS.10).aspx)